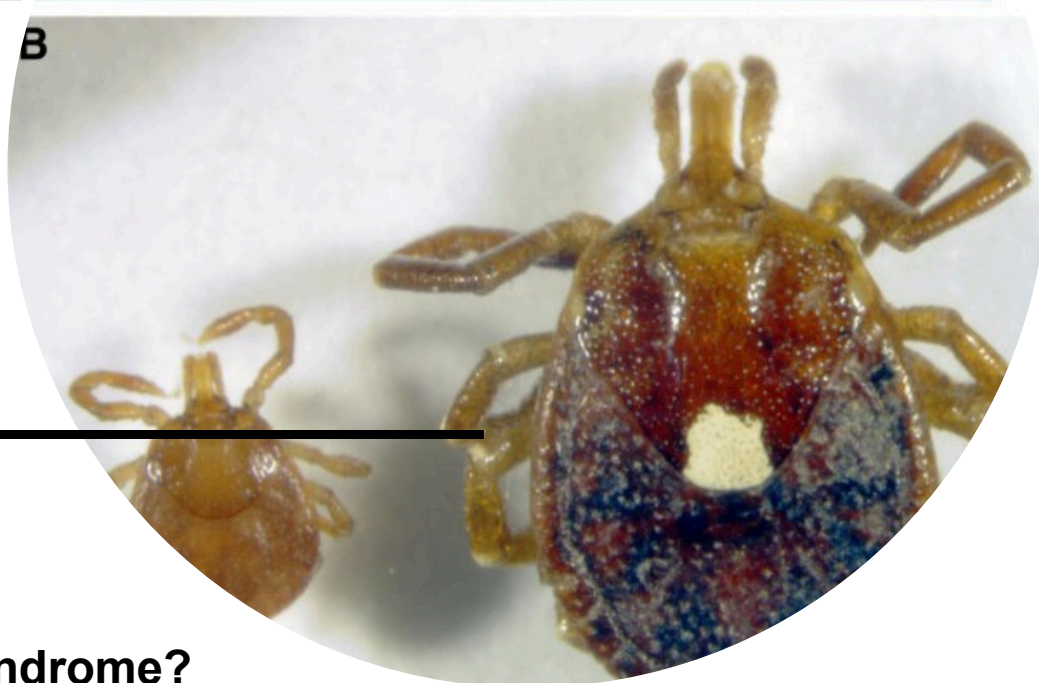


# ALPHA-GAL SYNDROME AWARENESS



**Alpha-Gal Syndrome  
is on the rise in  
Missouri. Come learn  
more about it and  
what you can do to  
protect yourself.**



## Topics include:

- What is Alpha-Gal Syndrome?
- Symptoms
- Screening
- Prevention
- Shopping for Alpha-Gal

**Call the library to register!**



**Osage County Library  
22 Library Lane  
Linn, MO 65051  
573-897-2951**

**rescheduled date:  
Thursday, Dec 18, 2025  
1:00pm - 2:00pm**

**Program presented by Nutrition and Health Specialists Rachel O'Halloran and Kathy Deeken.**